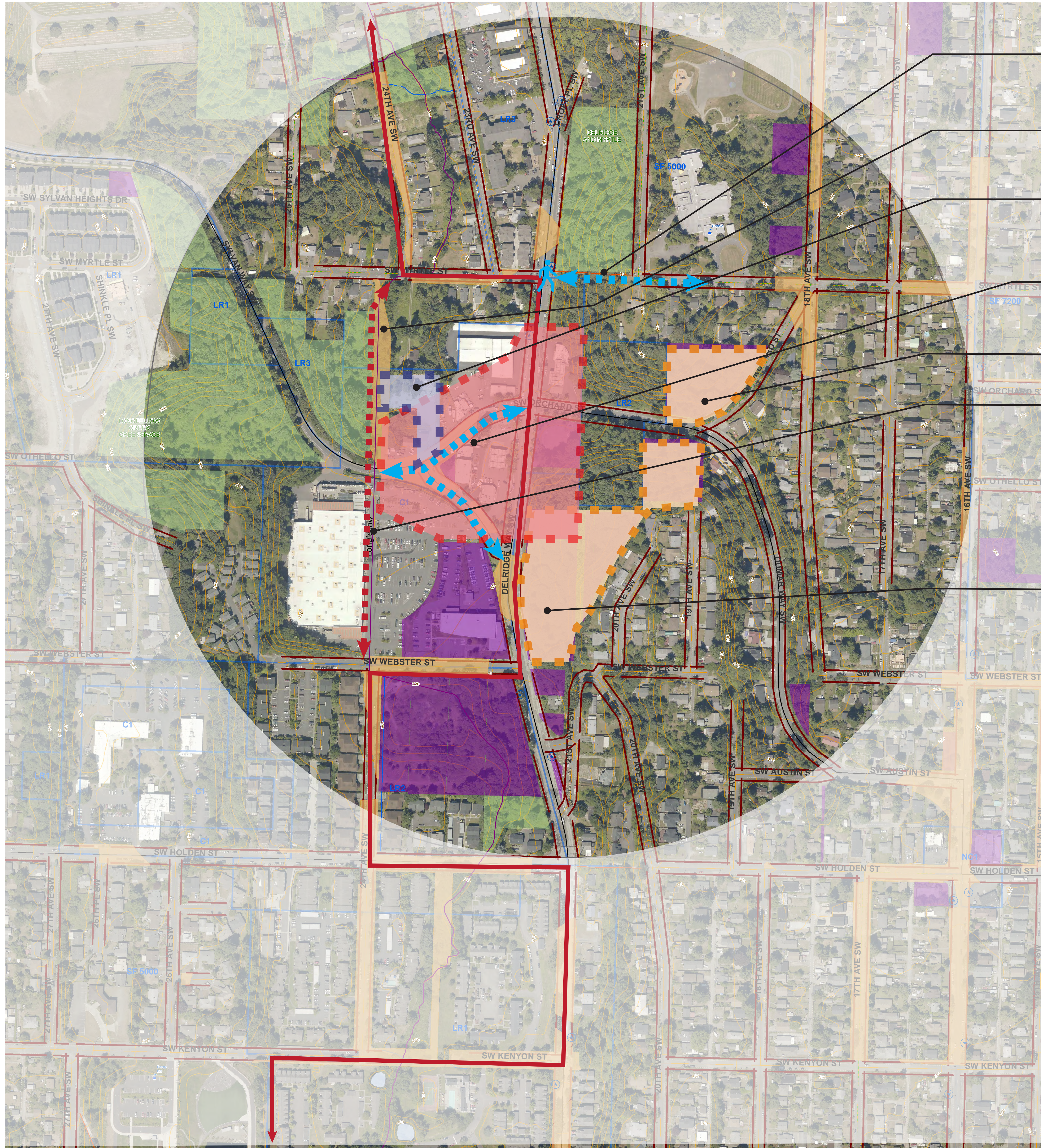


Sylvan Junction

Sylvan Junction: Destination Commercial

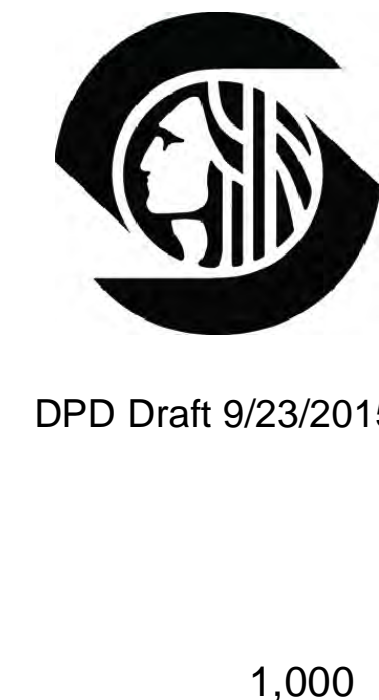
- Encourage new business development
- Improve Longfellow trail connections
- Consider options for SDOT parcels on east side of Delridge
- Support Vietnamese Cultural Ctr. as gathering space
- Highlight & improve community policing, and continued interaction between SW Precinct & larger community



- Improve Willow St. stairway to connect to Sanislo Elementary
- Explore continuing Longfellow Creek Trail segment
- Support Vietnamese Cultural Temple as a community gathering
- Add wide sidewalks & crosswalks
- Consider Lowrise zoning to encourage housing
- Explore ways to continue a more direct route of Longfellow Creek Trail off of Delridge Way such as partnering with SPU's Natural Drainage System improvements or future redevelopment of the Home Depot site
- Work with SDOT to consider mixed-use development

- Crosswalk/intersection improvement
- Sidewalk/streetscape & stair improvements
- Commercial mixed use areas
- Potential Residential areas
- Existing Greenways
- Planned Greenways
- Longfellow Crk. Trail

- Bus stops (for route 120, 125, 21)
- Streams
- Waterbody
- Potential Natural Drainage System Locations
- Stairway
- Swimming Pools
- Branch Libraries
- Community Centers
- Public School
- Sidewalks
- Trails
- Existing Neighborhood Greenway
- Proposed Neighborhood Greenway
- Proposed Neighborhood Greenway
- Existing Neighborhood Greenway
- 1/4 mile buffer
- Pavement Edge
- Parks
- City Property - Subject Parcels Dept
- Topography - 10 Foot
- Zoning - Category



DPD Draft 9/23/2015